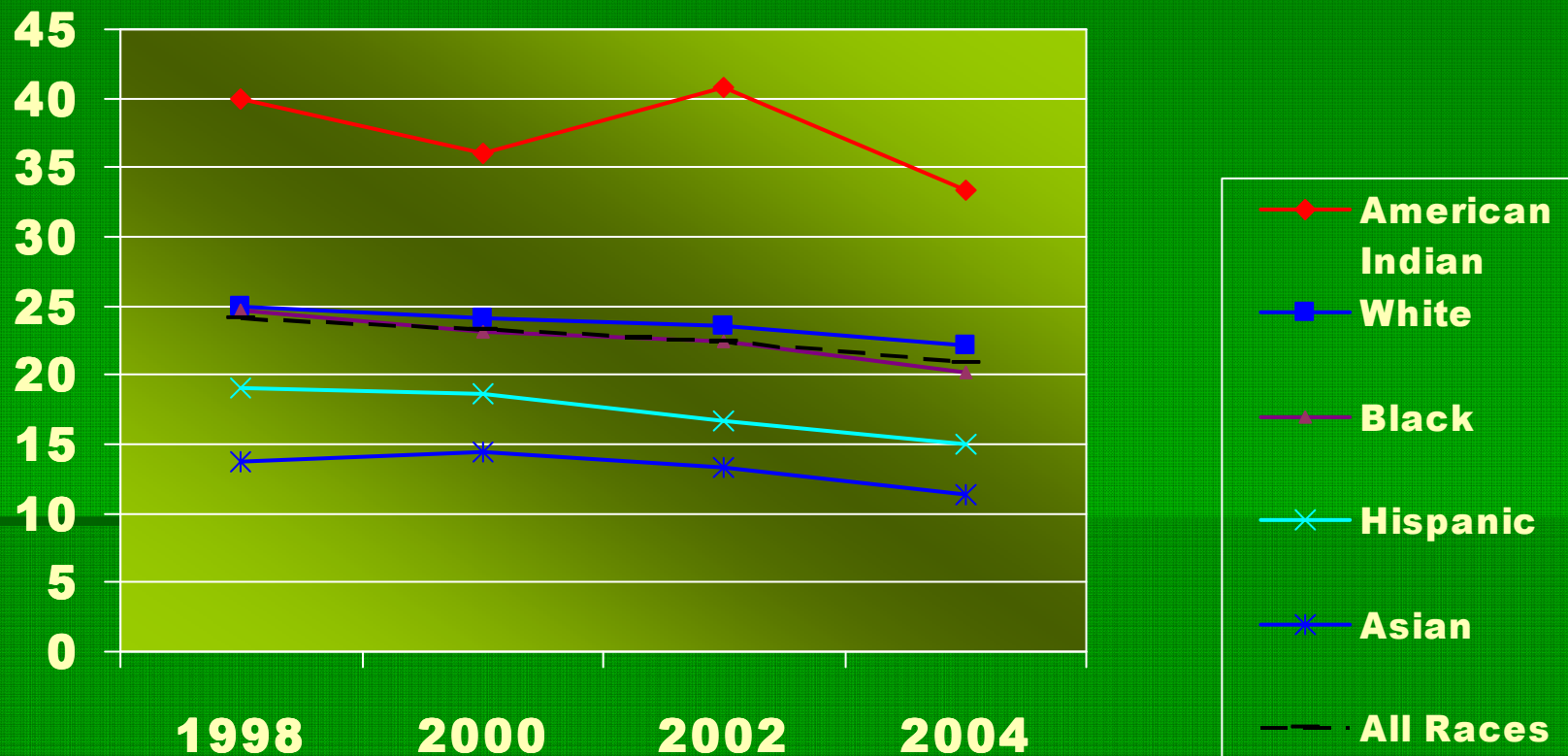


# ***Trends in American Indian Tobacco Use***

Prepared by:

Northern Plains Tobacco Prevention Project

# Adult Tobacco Use Trends by Race 1998 - 2004



# Data Table

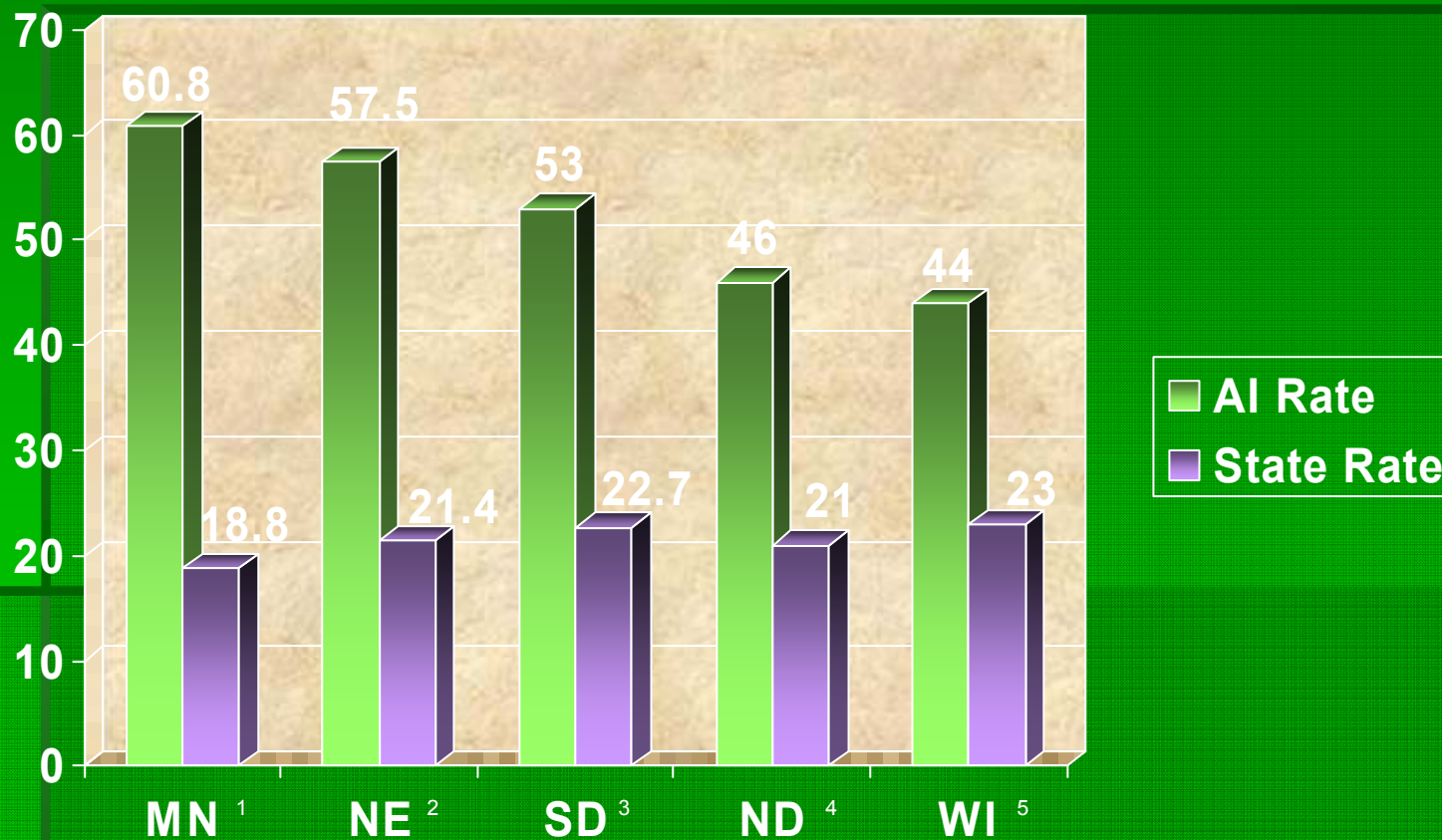
## Percentage of persons aged $\geq 18$ years who were current smokers, by race

Characteristic	1998	CI	2000	CI	2002	CI	2004	CI
White, Non-Hispanic	25.0	$\pm 0.7$	24.1	$\pm 0.7$	23.6	$\pm 0.8$	22.2	$\pm 0.8$
Black, Non-Hispanic	24.7	$\pm 1.6$	23.2	$\pm 1.5$	22.4	$\pm 1.6$	20.2	$\pm 1.7$
Hispanic	19.1	$\pm 1.3$	18.6	$\pm 1.3$	16.7	$\pm 1.2$	15.0	$\pm 1.2$
American Indian / Alaska Native*	40.0	$\pm 9.8$	36.0	$\pm 8.0$	40.8	$\pm 9.8$	33.4	$\pm 8.3$
Asian/ Pacific Islander	13.7	$\pm 3.0$	14.4	$\pm 2.8$	13.3	$\pm 2.4$	11.3	$\pm 2.4$
All Population	24.1	$\pm 0.6$	23.3	$\pm 0.5$	22.5	$\pm 0.6$	20.9	$\pm 0.6$

\* Wide variances on estimates reflect small sample sizes.

# Disparities in Smoking Prevalence by State\*

\* Data is based on multiple data sets



1. Calculations based on combined 1999 and 2000 data from the state ATS data

2. Calculations based on 1999 and 2000 data from state ATS

3. Calculations based on 2003 state BRFS data

4. Healthy North Dakota Highlights, 2004

5. Calculations based on state 1998-2002 state BRFS data